

McGill Ranch, Ltd

PO Box 3309
 Alice, TX 78333

Phone 361-664-3311

INVOICE

INVOICE #111
 DATE: FEBRUARY 26, 2009

TO:
 Coronado Energy E & P, L.L.C.
 C/O El Paso E&P Company, L.P.
 PO BOX 2764
 Corpus Christi, TX 78403

LOCATION:
 Coronado Wells #623

DESCRIPTION	AMOUNT
1) Plant Survey for Well Location and Access Road Covering Approximately 88,361.1168 sq ft (See Exhibit "A" Page 1)	\$59,584.00
2) Amended Plant Survey for Well Location Covering Approximately 96,715.14 sq ft (See Exhibit "A" Page 2)	\$37,115.00
3) Amended Plant Survey for Access Road Covering Approximately 14,251.9532 sq ft (See Exhibit "A" Page 3)	\$2,065.00
See Attached Exhibit "B" for Plat of Well Location and Access Road	
<p>Make all checks payable to McGill Ranch, Ltd Payment is due upon receipt.</p>	
TOTAL	\$98,764.00

Neither the submittance of this invoice, nor the acceptance of any payment thereon shall constitute a waiver, acceptance, ratification, revivor or adoption by McGill Ranch, Ltd. or any of the mineral owners of the affected tract(s) of any oil, gas and/or mineral lease under which the invoiced party may have purported to conduct operations.

COPY

Exhibit "A"

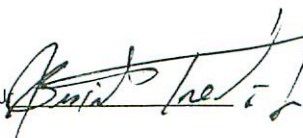
Well 623

Approximately 88,361.1168 sq. ft.

Date 10/01/2008

Plants	Caliper Size	Number of Plants	Price each	Total
Acacia sp	clump	4	\$ 25.00	\$ 100.00
Aloysia gratissima - Whitebrush	Multi trunk		\$ 25.00	
Celtis pallida - Granjeno	1 inch		\$ 25.00	
	1 1/2 inch	4	\$ 30.00	\$120
	2 inch		\$ 45.00	
	1		\$ 150.00	
	4 inch	1	\$ 200.00	\$ 200.00
Condalia hookeri - Brasil	1 inch	15	\$ 25.00	\$ 375.00
	1 1/2 inch		\$ 30.00	
	2 inch	8	\$ 45.00	\$360
	4 inch	7	\$ 200.00	\$1,400
	6 inch	2	\$ 325.00	\$ 650.00
	8 inch	2	\$900	\$1,800
Diospyros texana - Chapote	1 inch		\$ 25.00	
	1 1/2 inch		\$ 30.00	
	2 inch	1	\$ 45.00	\$ 45.00
	3 inch		\$ 150.00	
	4 inch		\$ 200.00	
Ephedra antisiphilitica	clump		\$ 25.00	
Eupatorium odoratum - Crucita	clump		\$ 25.00	
Jatropha dioica - Leatherstem	clump		\$ 25.00	
Lantana urticoides - Texas Lantana	Multi trunk	14	\$ 3.50	\$ 49.00
Lycium berlandieri - Berlandier Wolfberry	Multi trunk		\$ 25.00	
Opuntia engelmannii - Texas Prickly-pear	clump		\$ 15.00	
Opuntia leptocaulis - Tasajillo	1 inch	51	\$ 25.00	\$ 1,275.00
	1 1/2 inch		\$ 30.00	
	2 inch		\$ 45.00	
Prosopis glandulosa - Honey Mesquite	1 inch	23	\$ 25.00	\$575
	1 1/2 inch		\$ 30.00	
	2 inch	129	\$ 45.00	\$5,805
	3 inch	33	\$ 150.00	\$4,950
	4 inch	70	\$ 200.00	\$14,000
	6 inch	61	\$ 325.00	\$19,825
	8 inch	8	\$900	\$7,200
	10 inch		\$ 1,000.00	
	12 inch		\$1,250	
	14 inch		\$1,500	
Quercus sp.- Live Oak	1 inch		\$ 25.00	
	2 inch		\$ 45.00	
	4 inch		\$ 200.00	
Zanthoxylum clava- herculis - tooth ace tree	1 inch		\$ 25.00	
	1 1/2 inch		\$ 30.00	
	2 inch		\$ 45.00	
	3 inch		\$ 150.00	
	4 inch		\$ 200.00	
Zanthoxylum fagara - Colima	1 inch		\$ 25.00	
	1 1/2 inch		\$ 30.00	
	2 inch		\$ 45.00	
	3 inch		\$ 150.00	
	4 inch		\$ 200.00	
Zanthoxylum hirsutum, Tickle-Tongue	1 inch		\$ 25.00	
	1 1/2 inch		\$ 30.00	
	2 inch		\$ 45.00	
	3 inch		\$ 150.00	
	4 inch		\$ 200.00	
Ziziphus obtusifolius - Lotebush	1 inch		\$ 25.00	
	1 1/2 inch		\$ 30.00	
	2 inch	19	\$ 45.00	\$ 855.00
	3 inch		\$ 150.00	
	4 inch		\$ 200.00	
			Total	\$ 59,584.00

Benito Trevino
Botanist



COPY

Exhibit "A"

Amendment - Well 623

Approximately 96,715.14 sq. ft.

Date November 19, 2008

Plants	Caliper Size	Number of Plants	Price each	Total
Acacia sp	clump		\$ 25.00	
Aloysia gratissima - Whitebrush	Multi trunk		\$ 25.00	
Celtis pallida - Granjeno	1 inch	18	\$ 25.00	\$450
	1 1/2 inch	6	\$ 30.00	\$180
	2 inch	4	\$ 45.00	\$180
	1		\$ 150.00	
	4 inch		\$ 200.00	
Condalia hookeri - Brasil	1 inch		\$ 25.00	
	1 1/2 inch	2	\$ 30.00	\$60
	2 inch	5	\$ 45.00	\$225
	3 inch	4	\$ 150.00	\$600
	4 inch		\$ 200.00	
	6 inch	2	\$ 325.00	\$ 650.00
	8 inch	1	\$900	\$900
Diospyros texana - Chapote	1 inch		\$ 25.00	
	1 1/2 inch		\$ 30.00	
	2 inch		\$ 45.00	
	3 inch		\$ 150.00	
	4 inch		\$ 200.00	
Ephedra antisyphilitica	clump		\$ 25.00	
Eupatorium odoratum - Crucita	clump		\$ 25.00	
Jatropha dioica - Leatherstem	clump		\$ 25.00	
Lantana urticoides - Texas Lantana	Multi trunk		\$ 3.50	
Lycium berlandieri - Berlandier Wolfberry	Multi trunk		\$ 25.00	
Opuntia engelmannii - Texas Prickly-pear	clump		\$ 15.00	
Opuntia leptocaulis - Tasajillo	1 inch	11	\$ 25.00	\$ 275.00
	1 1/2 inch	24	\$ 30.00	\$720
	2 inch		\$ 45.00	
Prosopis glandulosa - Honey Mesquite	1 inch	11	\$ 25.00	\$275
	1 1/2 inch	20	\$ 30.00	\$600
	2 inch	94	\$ 45.00	\$4,230
	3 inch	49	\$ 150.00	\$7,350
	4 inch	16	\$ 200.00	\$3,200
	6 inch	24	\$ 325.00	\$7,800
	8 inch	7	\$900	\$6,300
	10 inch	3	\$ 1,000.00	\$3,000
	12 inch		\$1,250	
	14 inch		\$1,500	
Quercus sp.- Live Oak	1 inch		\$ 25.00	
	2 inch		\$ 45.00	
	4 inch		\$ 200.00	
Zanthoxylum clava- herculis - tooth ace tree	1 inch		\$ 25.00	
	1 1/2 inch		\$ 30.00	
	2 inch		\$ 45.00	
	3 inch		\$ 150.00	
	4 inch		\$ 200.00	
Zanthoxylum fagara - Colima	1 inch		\$ 25.00	
	1 1/2 inch		\$ 30.00	
	2 inch		\$ 45.00	
	3 inch		\$ 150.00	
	4 inch		\$ 200.00	
Zanthoxylum hirsutum, Tickle-Tongue	1 inch		\$ 25.00	
	1 1/2 inch		\$ 30.00	
	2 inch		\$ 45.00	
	3 inch		\$ 150.00	
	4 inch		\$ 200.00	
Ziziphus obtusifolius - Lotebush	1 inch		\$ 25.00	
	1 1/2 inch	4	\$ 30.00	\$ 120.00
	2 inch		\$ 45.00	
	3 inch		\$ 150.00	
	4 inch		\$ 200.00	
			Total	\$ 37,115.00

Benito Trevino Jr.
Botanist

COPY

Encinitos Ranch Plant Survey

Exhibit "A"

Amendment - Road to Well 623
Approximately 14,251.9532 sq. ft.

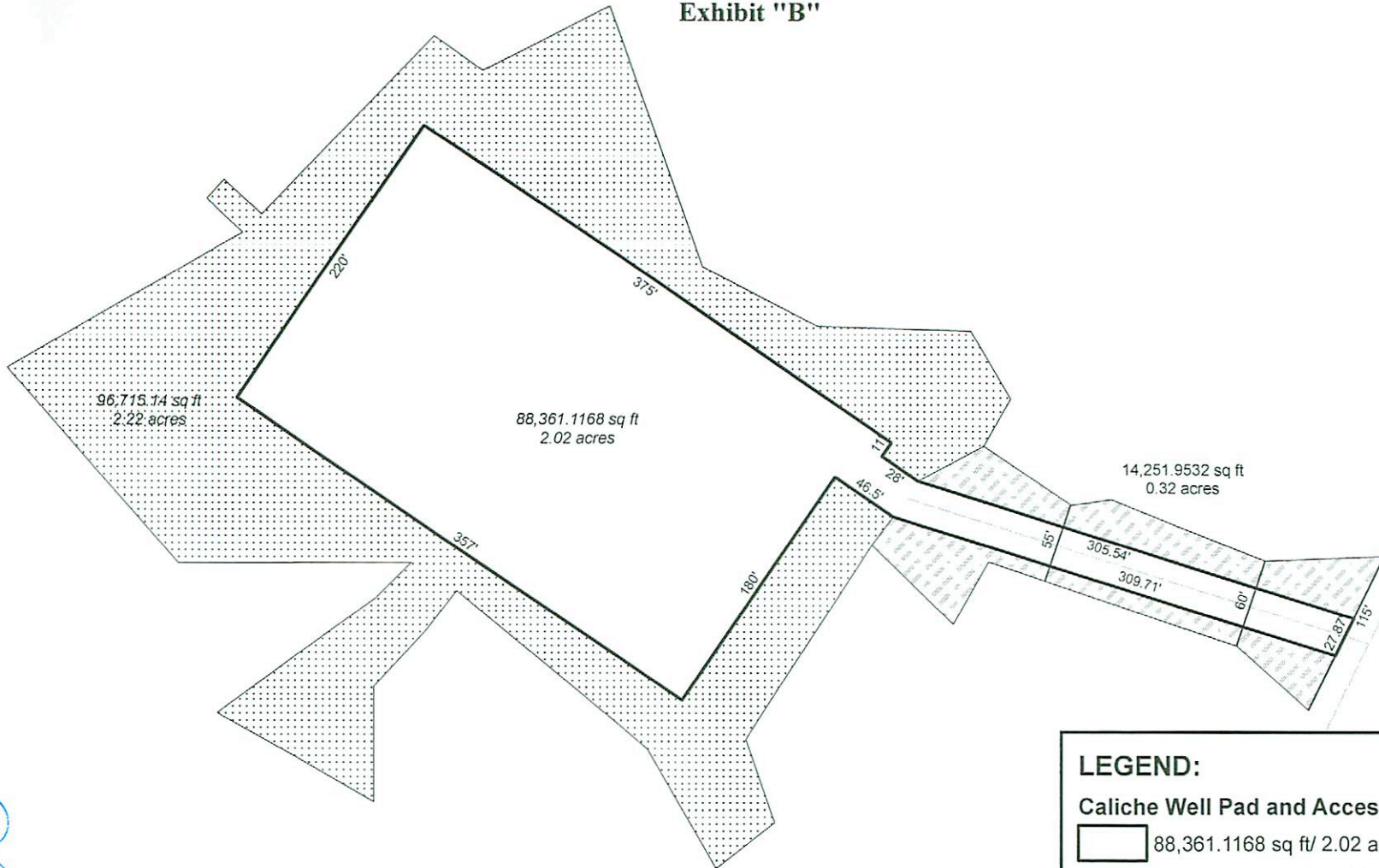
Date November 19, 2008

Plants	Caliper Size	Number of Plants	Price each	Total
Acacia sp	clump		\$ 25.00	
Aloysia gratissima - Whitebrush	Multi trunk		\$ 25.00	
Celtis pallida - Granjeno	1 inch		\$ 25.00	
	1 1/2 inch		\$ 30.00	
	2 inch		\$ 45.00	
	1		\$ 150.00	
	4 inch		\$ 200.00	
Condalia hookeri - Brasil	1 inch		\$ 25.00	
	1 1/2 inch		\$ 30.00	
	2 inch		\$ 45.00	
	3 inch		\$ 150.00	
	4 inch		\$ 200.00	
	6 inch		\$ 325.00	
	8 inch		\$900	
Diospyros texana - Chapote	1 inch		\$ 25.00	
	1 1/2 inch		\$ 30.00	
	2 inch		\$ 45.00	
	3 inch		\$ 150.00	
	4 inch		\$ 200.00	
Ephedra antisyphilitica	clump		\$ 25.00	
Eupatorium odoratum - Crucita	clump		\$ 25.00	
Jatropha dioica - Leatherstem	clump		\$ 25.00	
Lantana urticoides - Texas Lantana	Multi trunk		\$ 3.50	
Lycium berlandieri - Berlandier Wolfberry	Multi trunk		\$ 25.00	
Opuntia engelmannii - Texas Prickly-pear	clump	6	\$ 15.00	\$ 90.00
Opuntia leptocaulis - Tasajillo	1 inch		\$ 25.00	
	1 1/2 inch		\$ 30.00	
	2 inch		\$ 45.00	
Prosopis glandulosa - Honey Mesquite	1 inch		\$ 25.00	
	1 1/2 inch		\$ 30.00	
	2 inch	5	\$ 45.00	\$225
	3 inch	3	\$ 150.00	\$450
	4 inch	2	\$ 200.00	\$400
	6 inch		\$ 325.00	
	8 inch	1	\$900	\$900
	10 inch		\$ 1,000.00	
	12 inch		\$1,250	
	14 inch		\$1,500	
Quercus sp. - Live Oak	1 inch		\$ 25.00	
	2 inch		\$ 45.00	
	4 inch		\$ 200.00	
Zanthoxylum clava- herculis - tooth ace tree	1 inch		\$ 25.00	
	1 1/2 inch		\$ 30.00	
	2 inch		\$ 45.00	
	3 inch		\$ 150.00	
	4 inch		\$ 200.00	
Zanthoxylum fagara - Colima	1 inch		\$ 25.00	
	1 1/2 inch		\$ 30.00	
	2 inch		\$ 45.00	
	3 inch		\$ 150.00	
	4 inch		\$ 200.00	
Zanthoxylum hirsutum, Tickle-Tongue	1 inch		\$ 25.00	
	1 1/2 inch		\$ 30.00	
	2 inch		\$ 45.00	
	3 inch		\$ 150.00	
	4 inch		\$ 200.00	
Ziziphus obtusifolius - Lotebush	1 inch		\$ 25.00	
	1 1/2 inch		\$ 30.00	
	2 inch		\$ 45.00	
	3 inch		\$ 150.00	
	4 inch		\$ 200.00	
			Total	\$ 2,065.00

Benito Trevino Jr.
Botanist

COPY

Exhibit "B"



COPY

LEGEND:

- Caliche Well Pad and Access Road Area**
88,361.1168 sq ft/ 2.02 acres
- Perimeter Area Disturbed Around Well Pad**
96,715.14 sq ft/ 2.22 acres
- Perimeter Area Disturbed Around Access Road**
14,251.9532 sq ft/ 0.32 acres
- Existing Ranch Road

McGill Ranch, Ltd
Coronado Well 623 Location Map
Starr County, Texas

NOTES:



Scale: 1:1,100'