

McGill Ranch, Ltd

PO Box 3309
 Alice, TX 78333

Phone 361-664-3311

INVOICE

INVOICE #112
 DATE: FEBRUARY 17, 2009

TO:
 Coronado Energy E & P, L.L.C.
 C/O El Paso E&P Company, L.P.
 PO BOX 2764
 Corpus Christi, TX 78403

LOCATION:
 Coronado Wells #626

DESCRIPTION	AMOUNT
1) Plant Survey for Well Location Covering Approximately 96,386.31 sq ft (See Exhibit "A" Page 1)	\$278,170.00
2) Amended Plant Survey for Well Location Covering Approximately 78,944.61 sq ft (See Exhibit "A" Page 2)	\$48,360.00
3) Plant Survey for Access Road Covering Approximately 12,415.79 sq ft (See Exhibit "A" Page 3)	\$1,155.00
See Attached Exhibit "B" for Plat of Well Location and Access Road	
Make all checks payable to McGill Ranch, Ltd Payment is due upon receipt.	
TOTAL	\$327,685.00

Neither the submittance of this invoice, nor the acceptance of any payment thereon shall constitute a waiver, acceptance, ratification, revivor or adoption by McGill Ranch, Ltd. or any of the mineral owners of the affected tract(s) of any oil, gas and/or mineral lease under which the invoiced party may have purported to conduct operations.

COPY

Exhibit "A"

Encinitos Ranch Plant Survey

Well 626 Approximately 96,386.31 sq. ft.

9-17,9-19, and 9-20-2008

Plants	Caliper Size	Number of Plants	Price each	Total Price
Aloysia gratissima - vara dulce	Multi-trunk	1272	\$25	\$31,800
Capsicum annuum - chilipiquin	Multi-trunk	11	\$25	\$275
Celtis pallida - granjeno	1 inch	87	\$25	\$2,175
	1.5 inch	1884	\$30	\$56,520
	2 inch	88	\$45	\$3,960
	4 inch	5	\$200	\$1,000
	Condalia hookeri - brasil	1.5 inch	135	\$30
	2 inch	20	\$45	\$900
	4 inch	25	\$200	\$5,000
	6 inch	7	\$325	\$2,275
	8 inch	1	\$900	\$900
Cordia boissieri - Mexican Olive	2 inch	1	\$45	\$45
Diospyros texana - chapote	1.5 inch	2	\$30	\$60
Eupatorium odoratum - crucita	Multi-trunk	514	\$25	\$12,850
Lantana urticoides - Texas lantana	Multi-trunk	10	\$3.50	\$35
Opuntia leptocaulis - tasajillo	1 inch	25	\$25	\$625
Phalulothamnus spinescens - snake-eyes	Multi-trunk	10	\$30	\$300
Prosopis glandulosa - honey mesquite	1 inch	11	\$25	\$275
	2 inch	36	\$45	\$1,620
	4 inch	52	\$200	\$10,400
	6 inch	83	\$325	\$26,975
	8 inch	33	\$900	\$29,700
	10 inch	26	\$1,000	\$26,000
	14 inch	30	\$1,500	\$45,000
	16 inch	3	\$2,000	\$6,000
Zanthoxylum fagara - colima	1 inch	41	\$25	\$1,025
	1.5 inch	165	\$30	\$4,950
	2 inch	33	\$45	\$1,485
Ziziphus obtusifolius - lotebush	1 inch	26	\$25	\$650
	1.5 inch	41	\$30	\$1,230
	2 inch	2	\$45	\$90
			Total	\$278,170

Benito Trevino Jr.
Botanist

Exhibit "A"

Amendment Well 626
 Approximately 78,944.61 sq. ft.

Date January 14, 2009

Plants	Caliper Size	Number of Plants	Price each	Total
Acacia sp	clump		\$ 25.00	
Aloysia gratissima - Whitebrush	Multi trunk	251	\$ 25.00	\$ 6,275.00
Celtis pallida - Granjeno	1 inch	88	\$ 25.00	\$2,200
	1 1/2 inch	162	\$ 30.00	\$4,860
	2 inch	58	\$ 45.00	\$2,610
	3 inch	1	\$ 150.00	\$ 150.00
	4 inch		\$ 200.00	
Condalia hookeri - Brasil	1 inch	1	\$ 25.00	\$ 25.00
	1 1/2 inch	13	\$ 30.00	\$390
	2 inch	16	\$ 45.00	\$720
	3 inch	5	\$ 150.00	\$750
	4 inch	2	\$ 200.00	\$ 400.00
	8 inch		\$900	
Diospyros texana - Chapote	1 inch		\$ 25.00	
	1 1/2 inch	2	\$ 30.00	\$ 60.00
	2 inch		\$ 45.00	
	3 inch		\$ 150.00	
	4 inch	1	\$ 200.00	\$ 200.00
Eupatorium odoratum - Crucita	clump		\$ 25.00	
Jatropha dioica - Leatherstem	clump		\$ 25.00	
Lantana urticoides - Texas Lantana	Multi trunk		\$ 3.50	
Lycium berlandieri - Berlandier Wolfberry	Multi trunk		\$ 25.00	
Opuntia engelmannii - Texas Prickly-pear	clump		\$ 15.00	
Opuntia leptocaulis - Tasajillo	1 inch		\$ 25.00	
	1 1/2 inch	2	\$ 30.00	\$60
	2 inch		\$ 45.00	
Phaulothamnus spinescens - Snake-eyes	Multi trunk	3	\$ 25.00	\$ 75.00
Prosopis glandulosa - Honey Mesquite	1 inch		\$ 25.00	
	1 1/2 inch		\$ 30.00	
	2 inch	3	\$ 45.00	\$135
	3 inch	4	\$ 150.00	\$600
	4 inch	7	\$ 200.00	\$1,400
	6 inch	5	\$ 325.00	\$1,625
	8 inch	6	\$900	\$5,400
	10 inch	2	\$ 1,000.00	\$2,000
	12 inch	6	\$1,250	\$7,500
	14 inch	6	\$1,500	\$9,000
Quercus sp.- Live Oak	1 inch		\$ 25.00	
	2 inch		\$ 45.00	
	4 inch		\$ 200.00	
Zanthoxylum clava- herculis - tooth ace tree	1 inch		\$ 25.00	
	1 1/2 inch		\$ 30.00	
	2 inch		\$ 45.00	
	3 inch		\$ 150.00	
	4 inch		\$ 200.00	
Zanthoxylum fagara - Colima	1 inch	1	\$ 25.00	\$ 25.00
	1 1/2 inch	12	\$ 30.00	\$360
	2 inch	4	\$ 45.00	\$ 180.00
	3 inch	1	\$ 150.00	\$ 150.00
	4 inch		\$ 200.00	
Zanthoxylum hirsutum, Tickle-Tongue	1 inch		\$ 25.00	
	1 1/2 inch		\$ 30.00	
	2 inch		\$ 45.00	
	3 inch		\$ 150.00	
	4 inch		\$ 200.00	
Ziziphus obtusifolius - Lotebush	1 inch	7	\$ 25.00	\$ 175.00
	1 1/2 inch	19	\$ 30.00	\$ 570.00
	2 inch	7	\$ 45.00	\$ 315.00
	3 inch	1	\$ 150.00	\$ 150.00
	4 inch		\$ 200.00	
			Total	\$ 48,360.00

Benito Trevino Jr.
 Botanist

COPY

Encinitos Ranch Plant Survey

Exhibit "A"

Road to Well 626

Approximately 12,415.79 sq. ft.

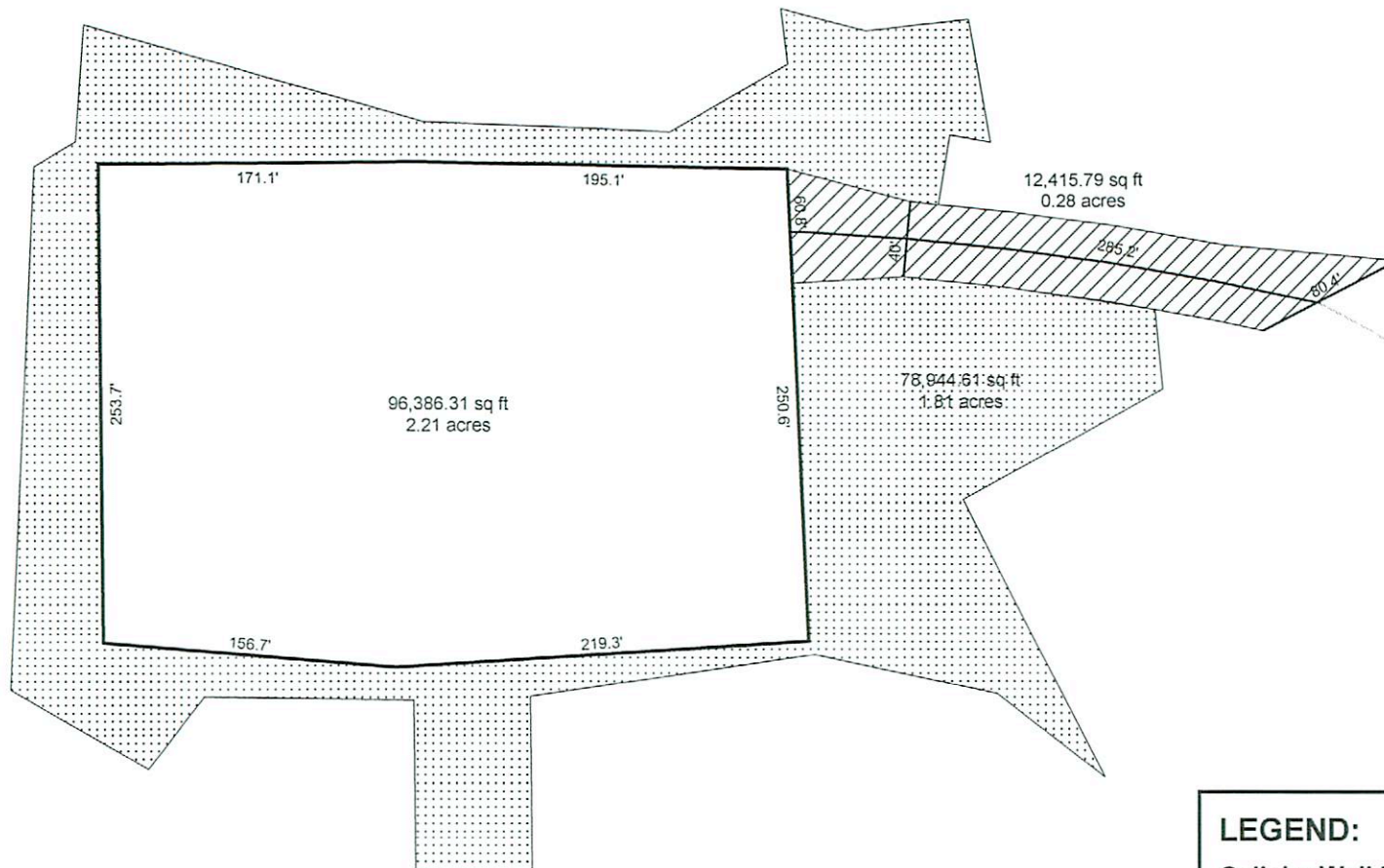
Date January 14, 2009

Plants	Caliper Size	Number of Plants	Price each	Total
Acacia sp	clump		\$ 25.00	
Aloysia gratissima - Whitebrush	Multi trunk		\$ 25.00	
Celtis pallida - Granjeno	1 inch		\$ 25.00	
	1 1/2 inch		\$ 30.00	
	2 inch	1	\$ 45.00	\$45
	3 inch		\$ 150.00	
	4 inch		\$ 200.00	
Condalia hookeri - Brasil	1 inch		\$ 25.00	
	1 1/2 inch	1	\$ 30.00	\$30
	2 inch	2	\$ 45.00	\$90
	3 inch	1	\$ 150.00	\$150
	4 inch	1	\$ 200.00	\$ 200.00
Diospyros texana - Chapote	8 inch		\$900	
	1 inch		\$ 25.00	
	1 1/2 inch		\$ 30.00	
	2 inch		\$ 45.00	
	3 inch		\$ 150.00	
Eupatorium odoratum - Crucita	4 inch		\$ 200.00	
	clump		\$ 25.00	
	Jatropha dioica - Leatherstem	clump	\$ 25.00	
	Lantana urticoides - Texas Lantana	Multi trunk	\$ 3.50	
	Lycium berlandieri - Berlandier Wolfberry	Multi trunk	\$ 25.00	
Opuntia engelmannii - Texas Prickly-pear	clump		\$ 15.00	
	1 inch		\$ 25.00	
	1 1/2 inch		\$ 30.00	
	2 inch		\$ 45.00	
	Multi trunk		\$ 25.00	
Opuntia leptocaulis - Tasajillo	1 inch	2	\$ 25.00	\$50
	1 1/2 inch		\$ 30.00	
	2 inch	3	\$ 45.00	\$135
	3 inch	1	\$ 150.00	\$150
	4 inch	1	\$ 200.00	\$200
	6 inch		\$ 325.00	
	8 inch		\$900	
	10 inch		\$ 1,000.00	
	12 inch		\$1,250	
	14 inch		\$1,500	
Quercus sp.- Live Oak	1 inch		\$ 25.00	
	2 inch		\$ 45.00	
	4 inch		\$ 200.00	
	Zanthoxylum clava- herculis - tooth ace tree	1 inch		\$ 25.00
Zanthoxylum fagara - Colima	1 1/2 inch		\$ 30.00	
	2 inch		\$ 45.00	
	3 inch		\$ 150.00	
	4 inch		\$ 200.00	
	1 inch	3	\$ 25.00	\$ 75.00
Zanthoxylum hirsutum, Tickle-Tongue	1 1/2 inch	1	\$ 30.00	\$30
	2 inch		\$ 45.00	
	3 inch		\$ 150.00	
	4 inch		\$ 200.00	
Ziziphus obtusifolius - Lotebush	1 inch		\$ 25.00	
	1 1/2 inch		\$ 30.00	
	2 inch		\$ 45.00	
	3 inch		\$ 150.00	
	4 inch		\$ 200.00	
			Total	\$ 1,155.00

Benito Trevino Jr
Botanist

COPY

EXHIBIT "B"



COPY

LEGEND:

- Caliche Well Pad Area**
[White Box] 96,386.31 sq ft/ 2.21 acres
- Perimeter Area Disturbed Around Well Pad**
[Stippled Box] 78,944.61 sq ft/ 1.81 acres
- Access Road Area**
[Diagonal Lines Box] 12,415.79 sq ft/ 0.28 acres

McGill Ranch, Ltd
Coronado Well 626 Location Map
Brooks County, Texas

NOTES:



Scale: 1:100'